

TWIN METALS MINNESOTA

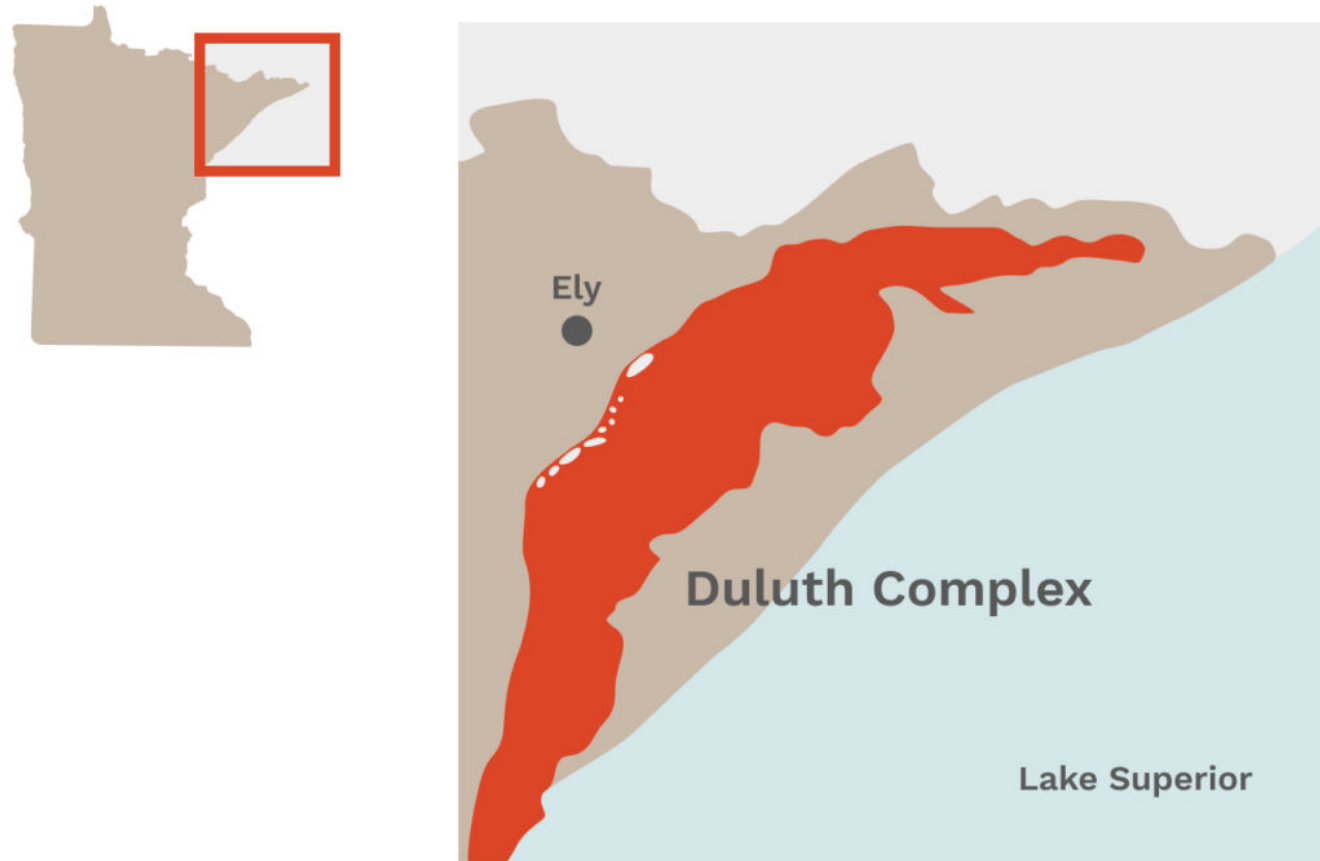


Twin Metals Minnesota

Intends to develop and operate a safe, sustainable 21st century underground mining project in northeastern Minnesota. We will mine copper, nickel, cobalt and platinum group metals.

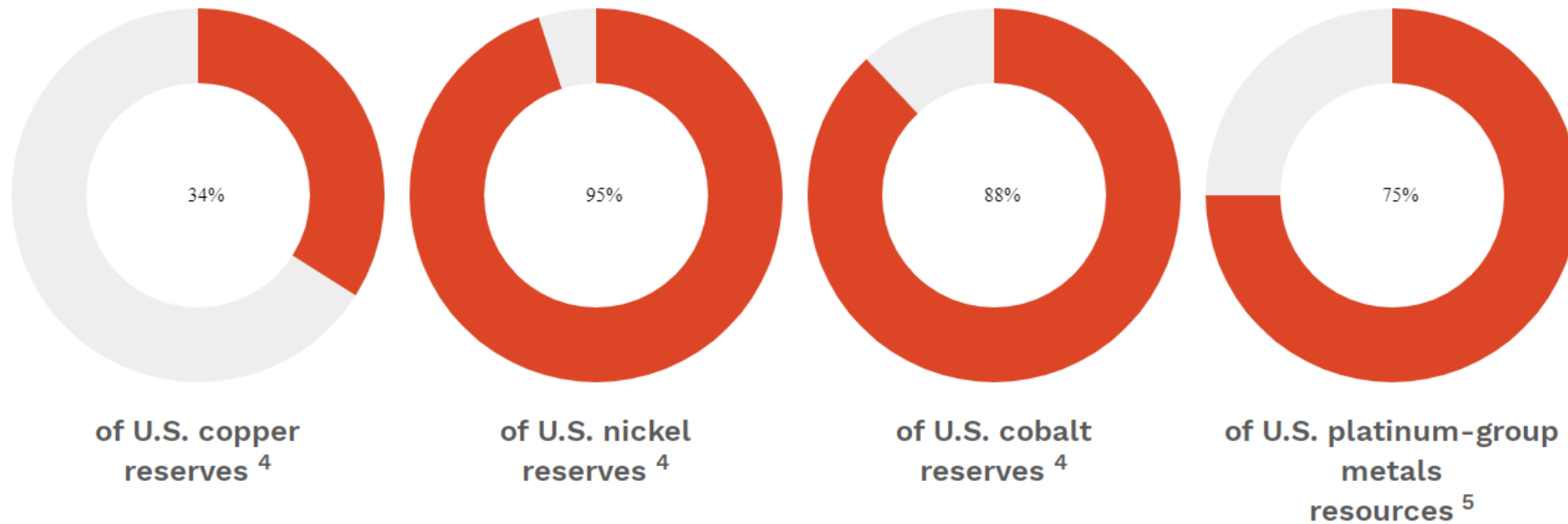


Northeast Minnesota's Duluth Complex: The world's largest known undeveloped copper-nickel deposit



The U.S. green economy transition can start here in Minnesota

Inside Minnesota's Duluth Complex.



Mining more than 3 billion tonnes of minerals and metals the world needs by 2050 is seen as the only path to limiting global warming by 2°C or less

– WORLD BANK



Wiring and piping in homes and buildings



Wind turbines



Standard and hybrid automobiles



Cell phones and other electronics



Machinery



Stainless steel for hospital equipment



Automobiles



Aircraft engines



Solar panels



Batteries



Electronics chip



Catalytic converters in vehicles



Medical and dental instruments



Turbine engines



Rechargeable batteries



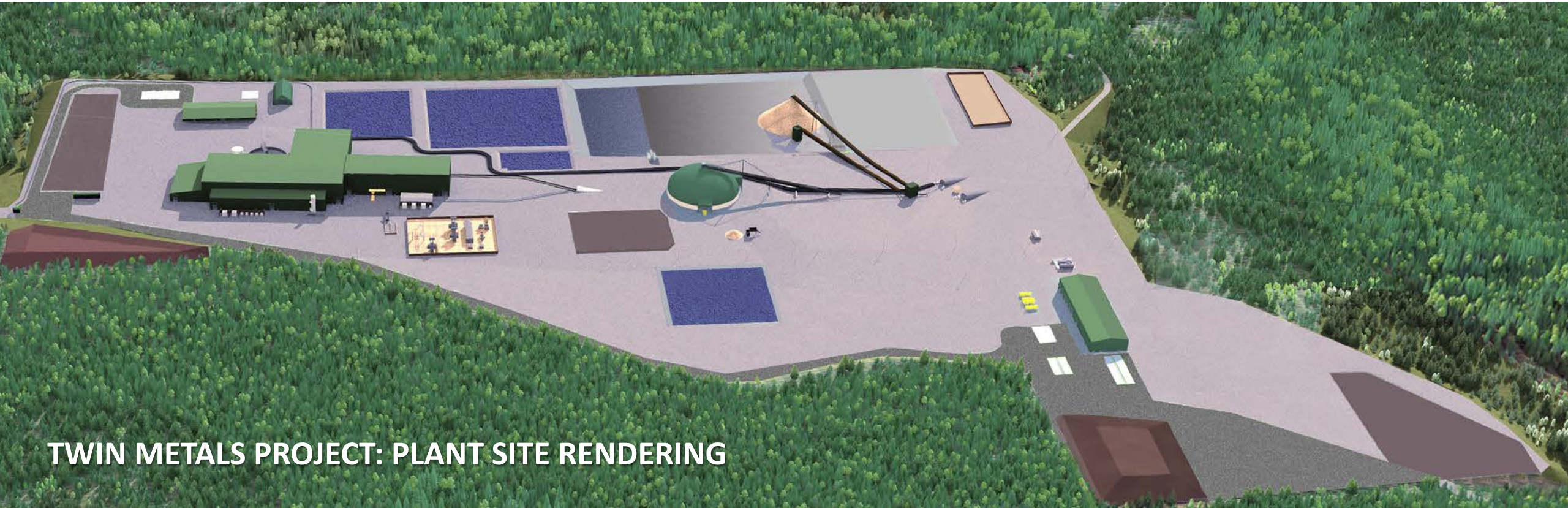
Electronics



Healthcare: tumor detection, radiotherapy and more

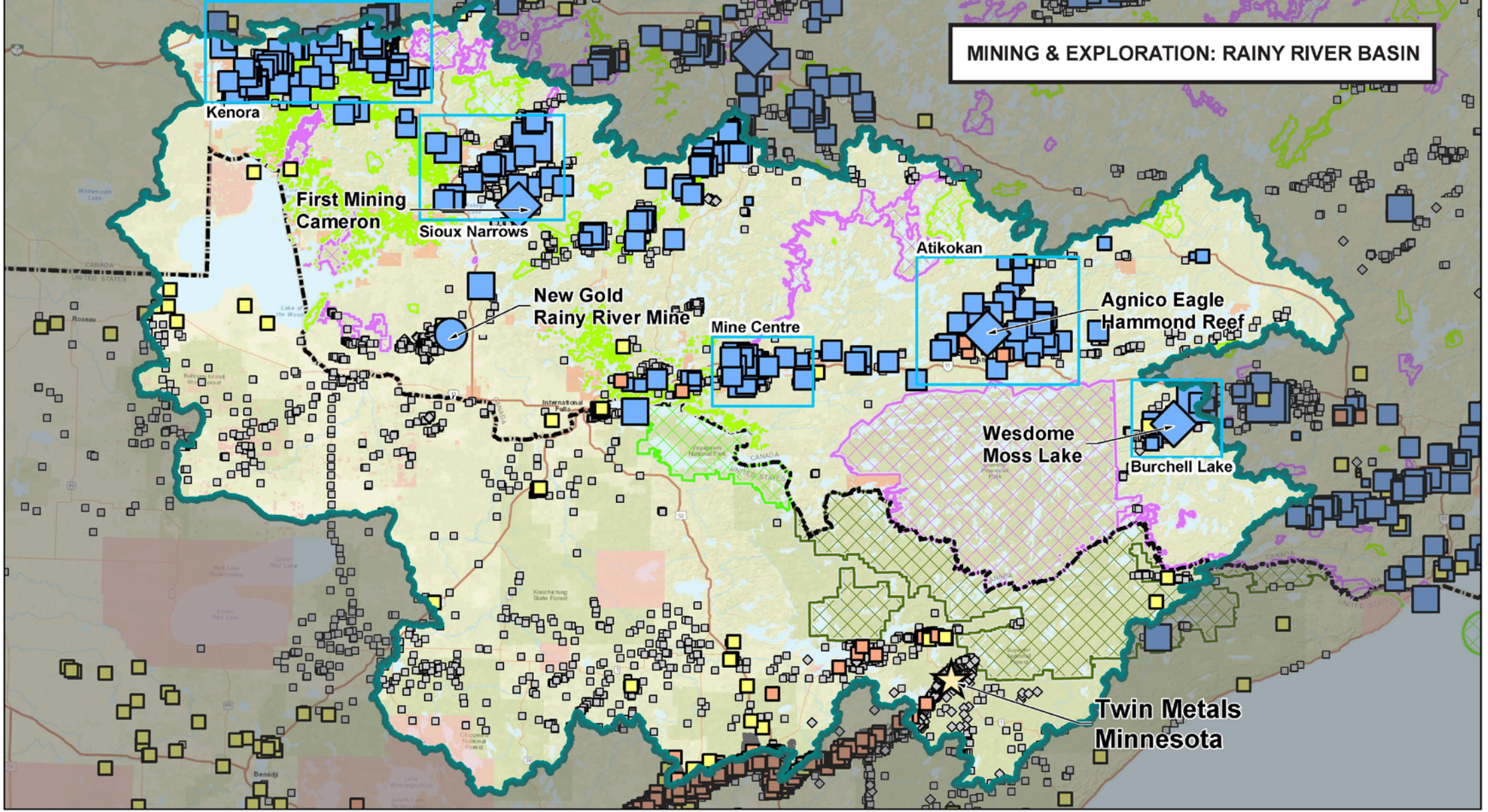
TWIN METALS PROJECT

- Safety as a core value
- Unique mineral deposit
- Minimal surface impact
- No subsidence above the mine
- No waste rock piles
- Tailings are non-acid generating
- Up to half of tailings returned underground
- Dry stack tailings management
- No Dam



TWIN METALS PROJECT: PLANT SITE RENDERING

MINING & EXPLORATION: RAINY RIVER BASIN



LEGEND

- | | | | | |
|------------------------------|--------------------------------|--|---|---------------------------------------|
| Current Producers | Exploratory Drill Holes | Past Producers | Rainy River Basin | Canadian Conservation Reserves |
| ◆ Exploration and Permitting | ◇ Current (2011 - present) | ■ Aggregate, Industrial Mineral, Unknown | ■ Canadian Aboriginal Land Boundaries | ■ Voyageurs National Park |
| ● Non-ferrous | □ Historic (before 2011) | ■ Non-ferrous (sized by AMIS Class) | ■ U.S. Tribal Government Boundaries | ■ Provincial Parks |
| | | ■ Ferrous | ■ Boundary Waters Canoe Area Wilderness | |



TWIN METALS MINNESOTA	
FIGURE 1 MINING AND EXPLORATION IN THE RAINY RIVER BASIN	
Scale: 0 5 10 15 20 Miles	Date: JANUARY 2020
DCN:	Project No:

To meet the needs of tomorrow, we must start planning today

