

500 kV Transmission Line Relocation Update

February 2021

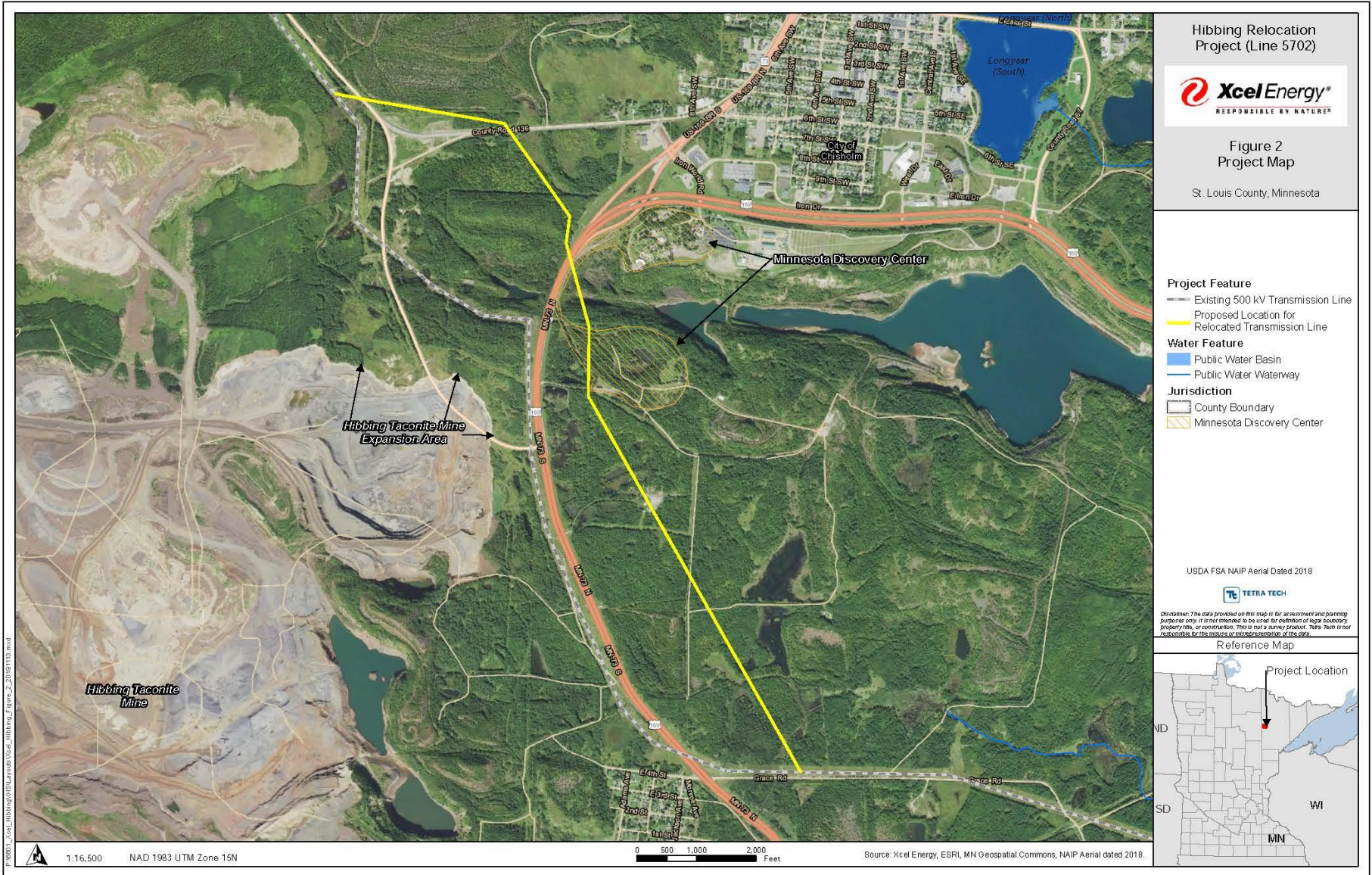


Xcel Energy 500 kV line

- Major Interconnection with Manitoba hydro
- Power comes from Nelson River Hydro Project

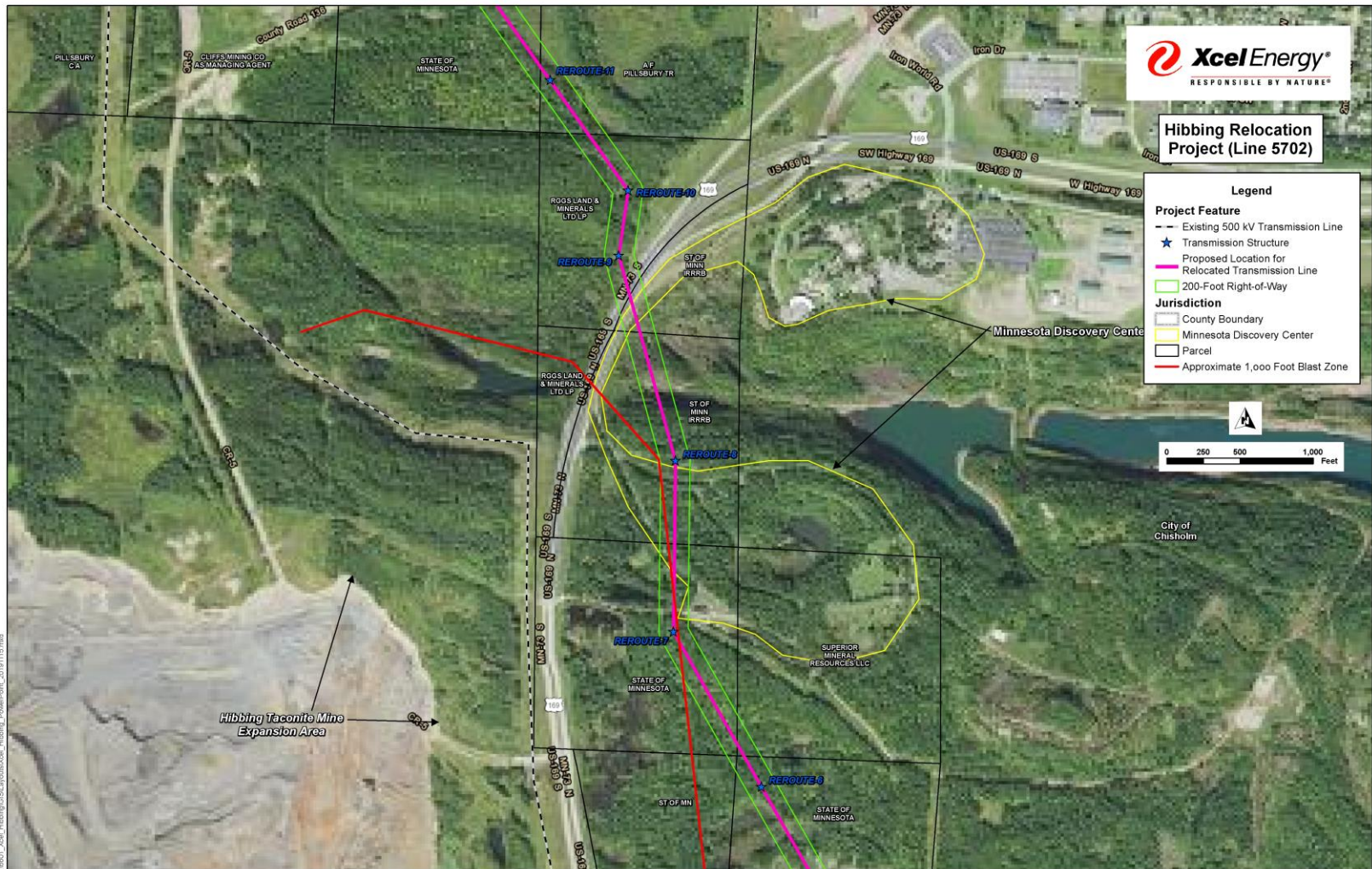


Project Map



Siting Challenges

Discovery Center, Expanding Mine, Highway 169



Schedule

- Winter 2020-2021
 - Tree clearing in the new corridor
 - Geotechnical testing
 - Foundation work at southern end
- Spring – Summer 2021
 - Construct new towers on new corridor
- October 2021
 - Construction of new line complete
- December 2021
 - Old line removed

