



INTRODUCTION

Thomas Hall
Forest Supervisor
Superior National Forest

Caring for the Land and Serving People.



RAINY RIVER WITHDRAWAL

Matthew Judd

March 2023

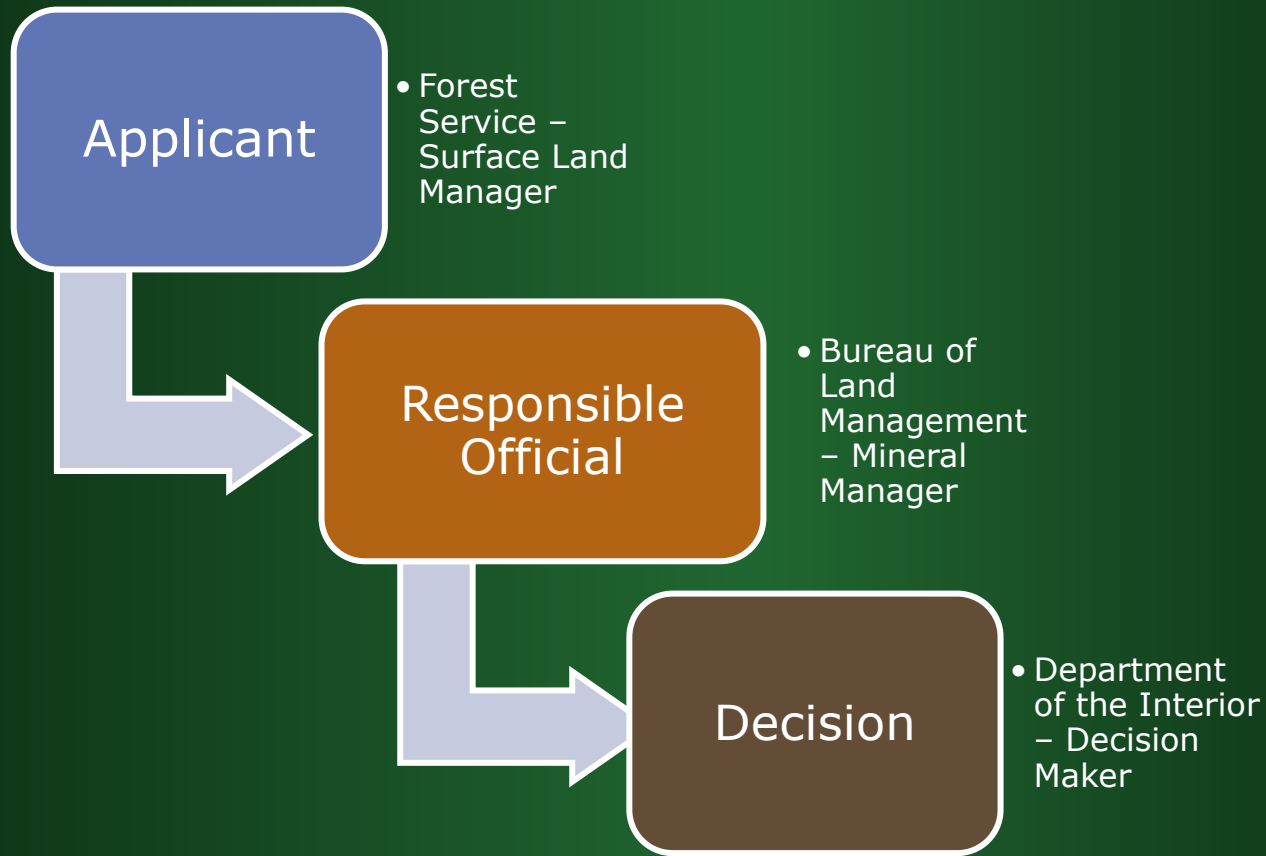
Caring for the Land and Serving People.

What is a Withdrawal?

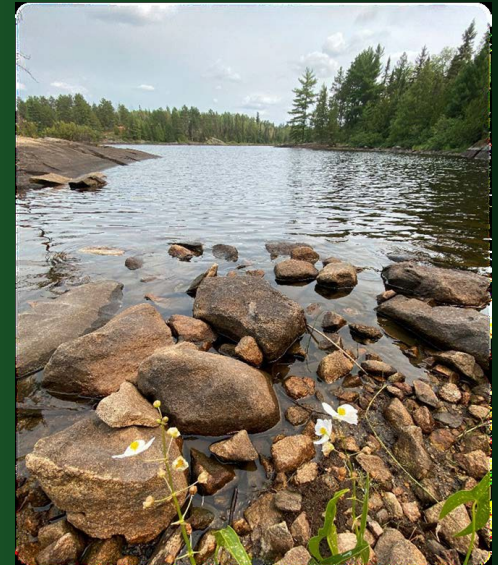
- Through a withdrawal under section 204 of the Federal Land Policy and Management Act (FLPMA) the Secretary of the Interior may close public lands to mineral leasing, subject to valid existing rights.
- Does not apply to state or private mineral estates.
- Does not apply to federal sand, gravel, or stone quarries.



Withdrawal Process



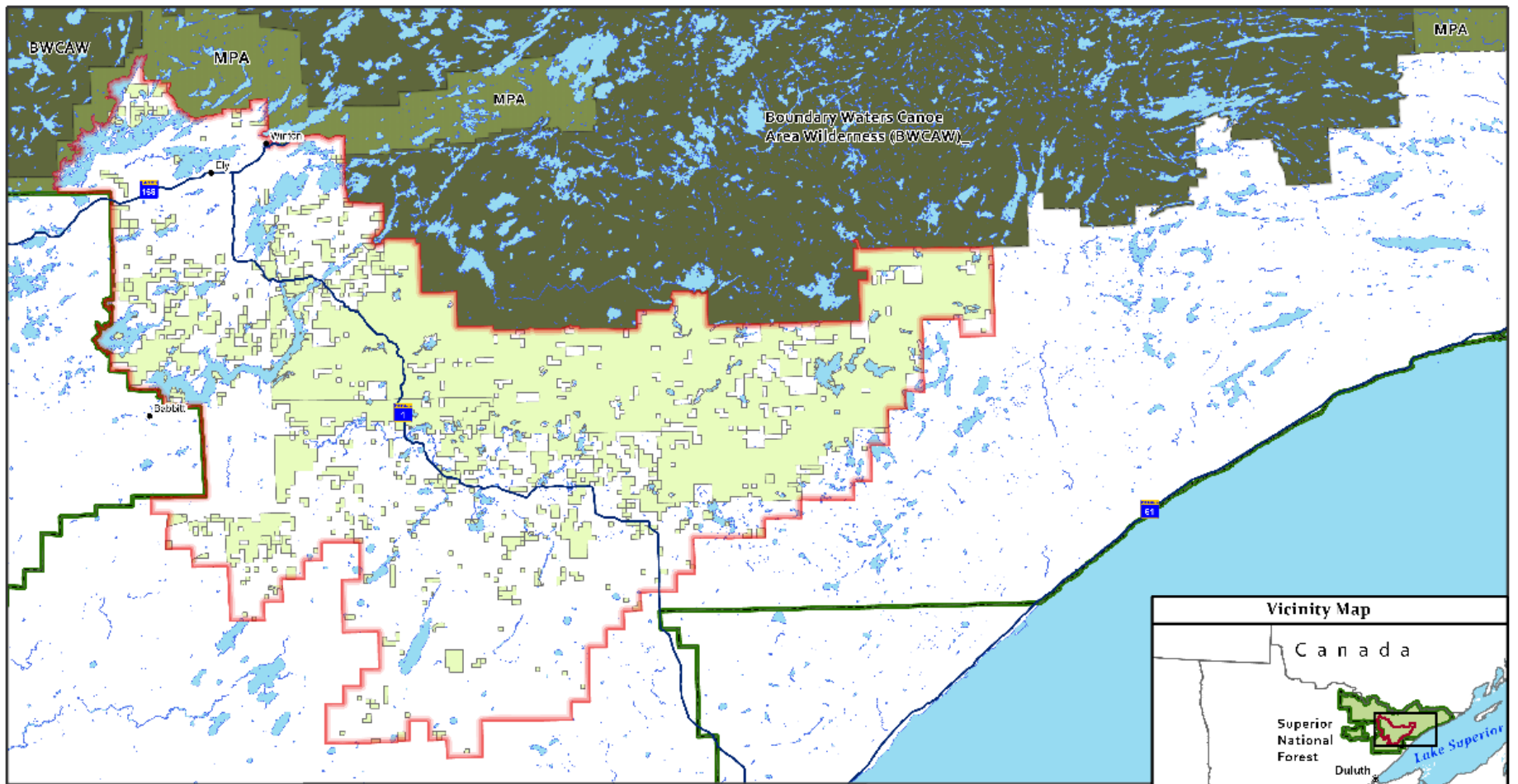
Why a Withdrawal?



Withdrawal Decision

- Following the Secretary of the Interior's decision, no new proposals or applications for federal mineral development within the mineral withdrawal boundary will be considered by the Forest Service or BLM, on Federal Lands. All other national forest activities remain unaffected by the Secretary's decision.
- Effective 20 Years from January 26, 2023.





Appendix B: Superior National Forest
November 16, 2022
Cook, Lake, and St. Louis Counties State of Minnesota
USDA Forest Service - Region 9 Superior National Forest
NAD 1983 UTM Zone 15N Transverse Mercator

Application Boundary	MN Highway
Federal Minerals Within Boundary (Revised)	Capital
Superior National Forest Boundary	Major Cities
Mining Protection Area - Lands withdrawn from mineral entry	Small Cities
Wilderness Area - Lands withdrawn from mineral entry	

0 5 10 20 Miles

N

References
Data acquired from a variety of sources of differing accuracy, precision, and reliability. Features represented by these data may not represent accurate geographic locations.

Disclaimer
The USDA Forest Service makes no warranty, expressed or implied regarding the data displayed on this map, and reserves the right to correct, update, modify, or replace this information without notification.



Questions?

- <https://eplanning.blm.gov/eplanning-ui/project/2022642/510>

