



MINNESOTA

OFFICE OF SCHOOL TRUST LANDS

Mineland Vision Partnership
May 20, 2026



Agenda

Asset Management Plan

Recreational Use Study

PSF Distribution Task Force

Asset Management Plan



Cost Allocation Rationale

What

We need a shared understanding of all DNR school trust land-related activities and their associated costs utilizing the best methodologies for calculating those costs.

Why

Routinely tracking and understanding cost information will allow for:

- ✓ More meaningful and informed management plans.
- ✓ Better prioritizing management efforts.
- ✓ Developing performance measures.
- ✓ Reporting accurate and credible financial information.

Cost Allocation Rationale

How

- ✓ Division specific analysis, completed.
- ✓ Revenues and costs by asset class
- ✓ Aggregated revenues and costs to portfolio-level.

When

- Calendar Year 2026
- ✓ Spring, leadership
 - ✓ Summer
 - ✓ Fall/Winter

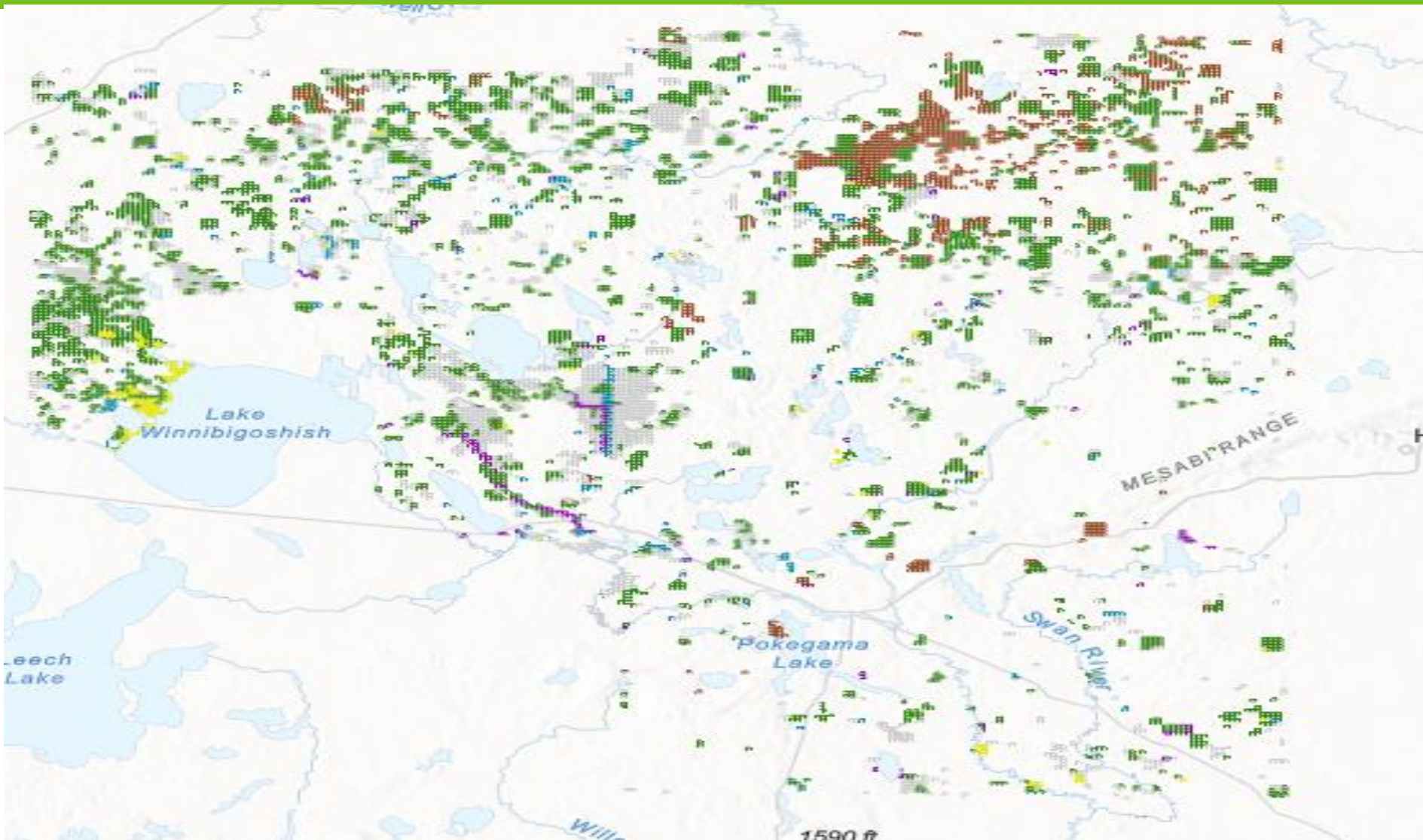
Land Classification Application

A GIS-based application designed to:



1. Identify current and future revenue capabilities to the parcel level.
2. Describe land attributes with potential for maximum economic returns.
3. Promote efficient data-driven decision making by land managers.

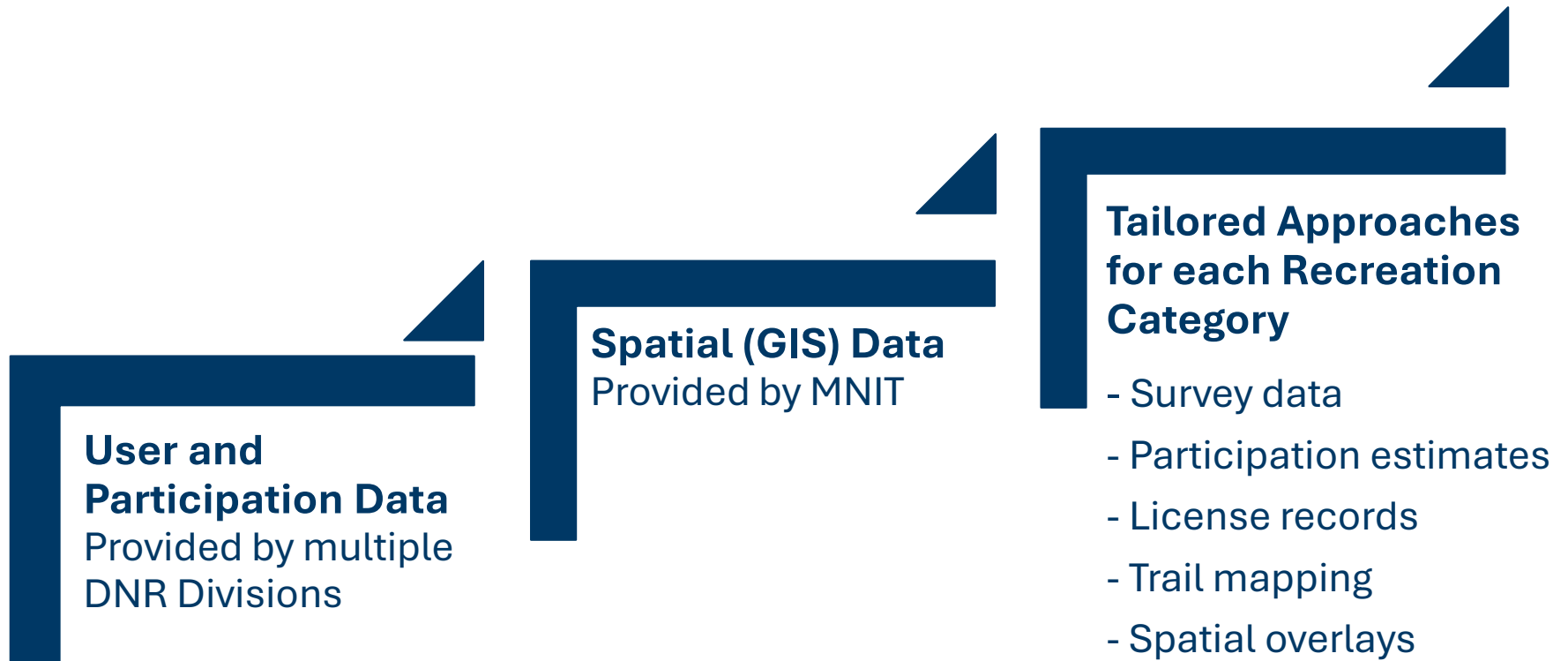
Data Driven GIS



Recreational Use Study

Assess recreational use on school trust lands to inform potential allocation of outdoor recreation fees to the Permanent School Fund.

Overall Methodology



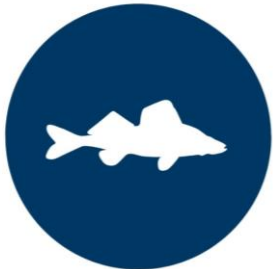
Establishes defensible estimates of recreational use on school trust lands.

Findings by Activity



6.6M annual hunting days, 4% on trust land

9% ATV trails; 4% Snowmobile trails



25M annual fishing days, 1% of trust PWAs

848 acres in Parks and Rec Areas



3.8M boat launches from PWA; 4.5% trust

474 entrances, \$155,000 in year 1



Recreational Use in Other States

Comparison of six states

State	Management Model	Annual Revenue
Minnesota	Open, no general fee; public benefit model (open public access)	Minimal
Colorado	Closed unless authorized; recreation leases plus agency access lease	\$3.9 million
Montana	Permit required; recreation permits plus commercial licenses	\$2.3 million
New Mexico	Permit required; recreation access permits plus long-term leases	? but growing
Utah	Not public land; agency compensation plus permits and leases	\$2.1 million
Wyoming	Partially open, no fee; access with restrictions plus limited permits and leases	Limited

Recreational Use Study

Report available at:

<https://mn.gov/school-trust-lands/publications/#1>

Permanent School Fund



PSF Task Force

Beneficiary representatives, state and tribal government officials and investment and wealth management experts working to:

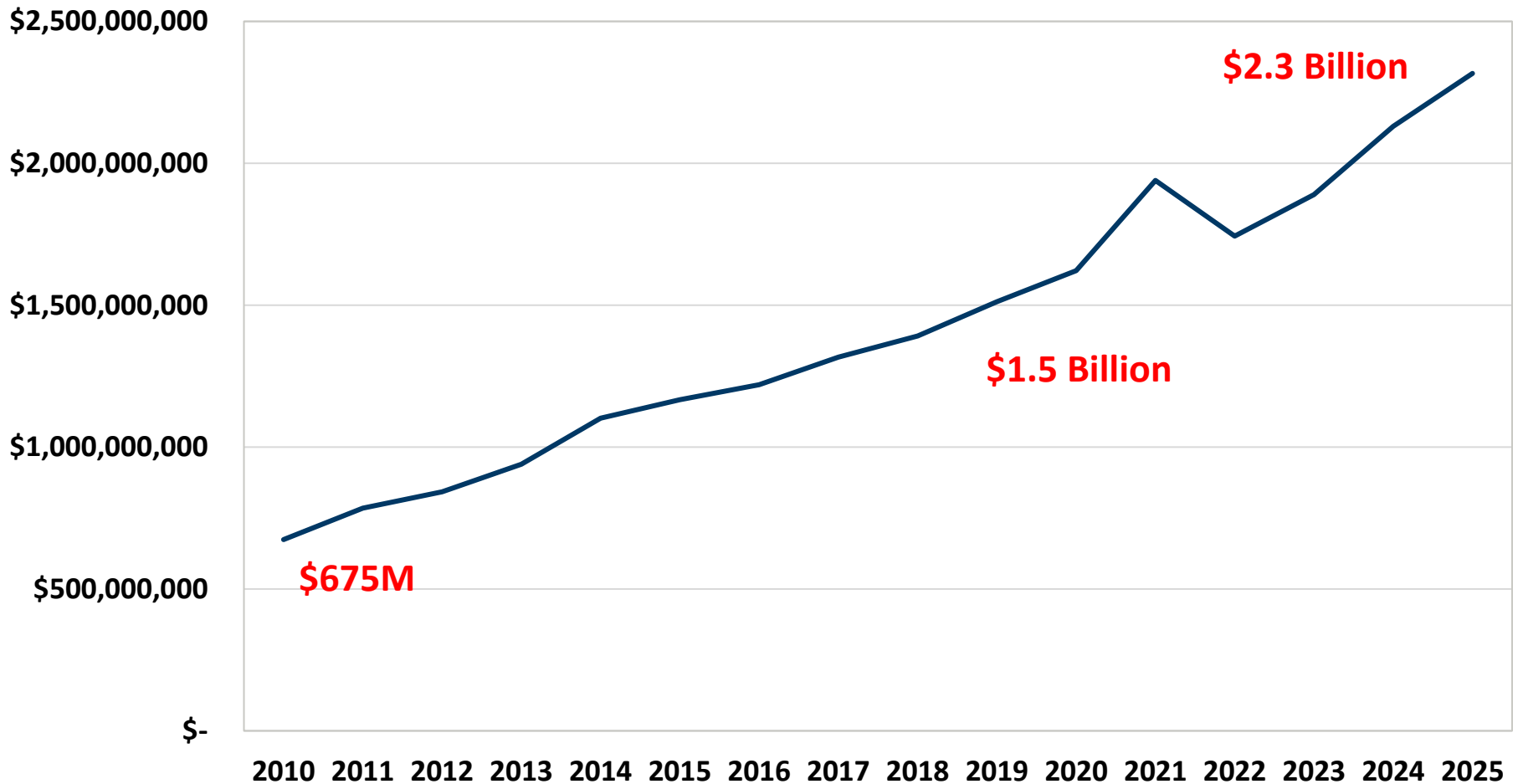


1. Analyze past returns on the PSF endowment.
2. Evaluate the distribution of earnings and capital growth in the fund.
3. Examine school trust endowment policies in other states.

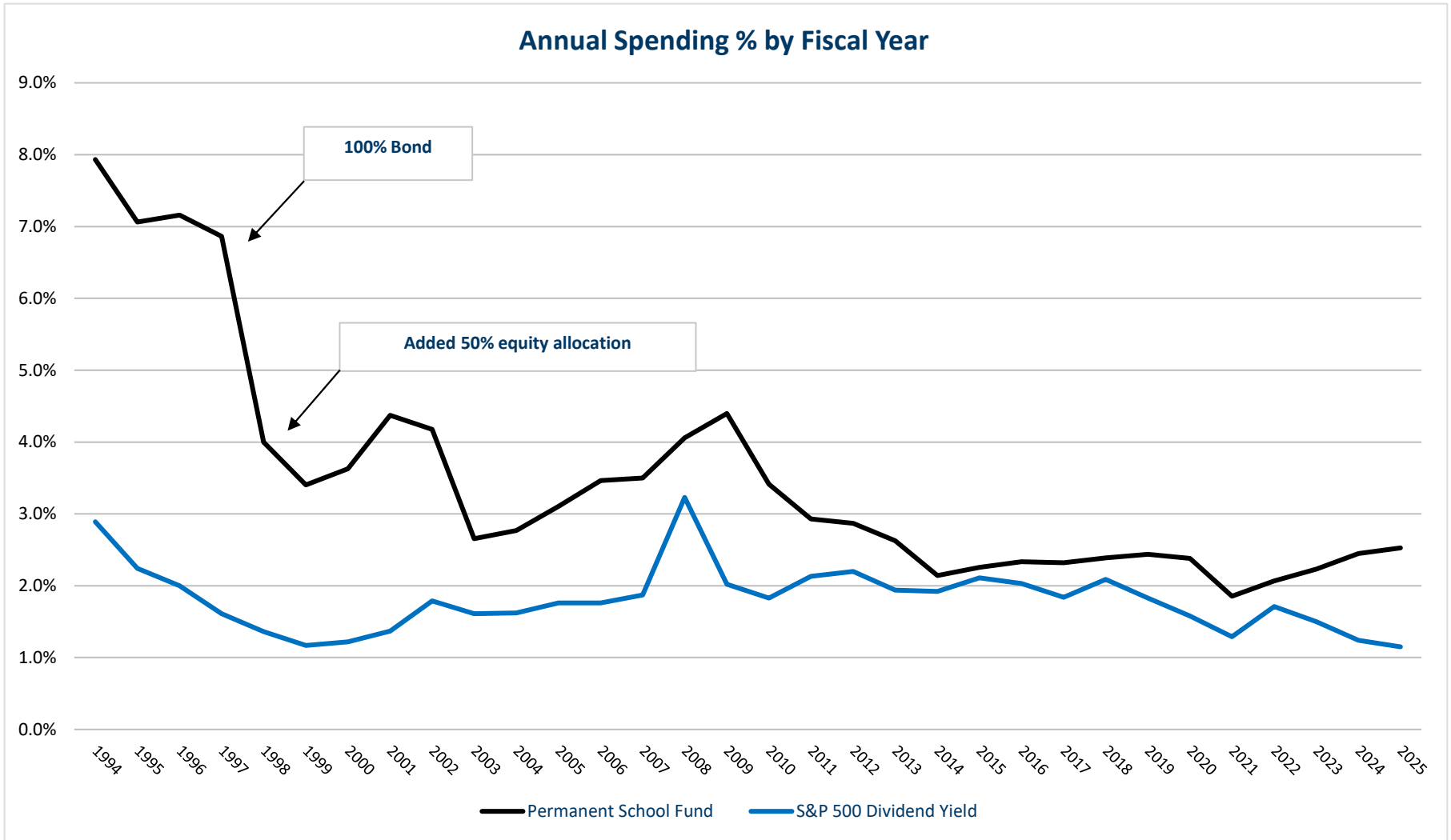
Recommendation: amend constitution to allow distribution of earnings at 4.5% of 3-year average market value. SF3594/HF3900

PSF Task Force

Permanent School Fund Growth

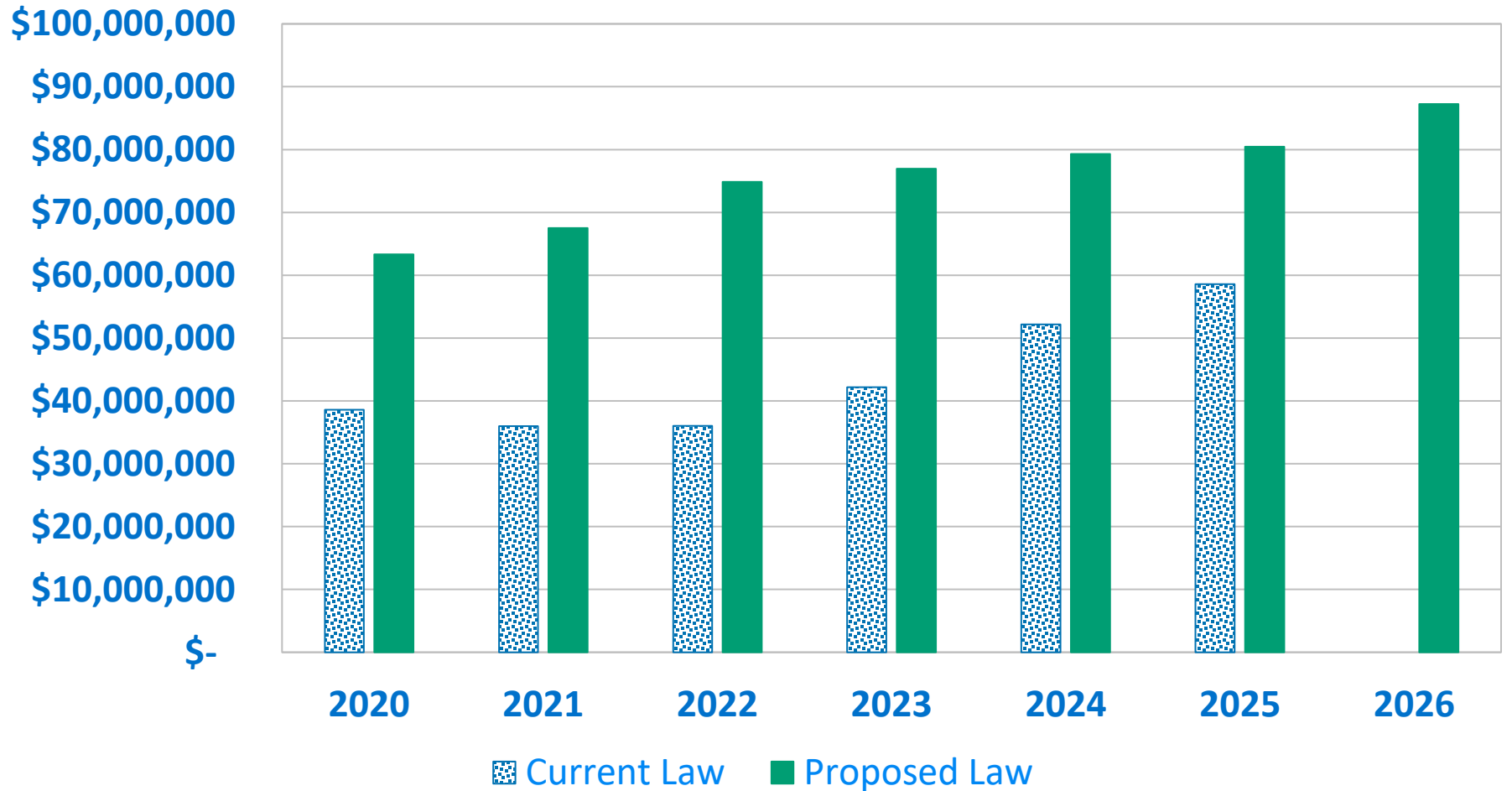


PSF Task Force

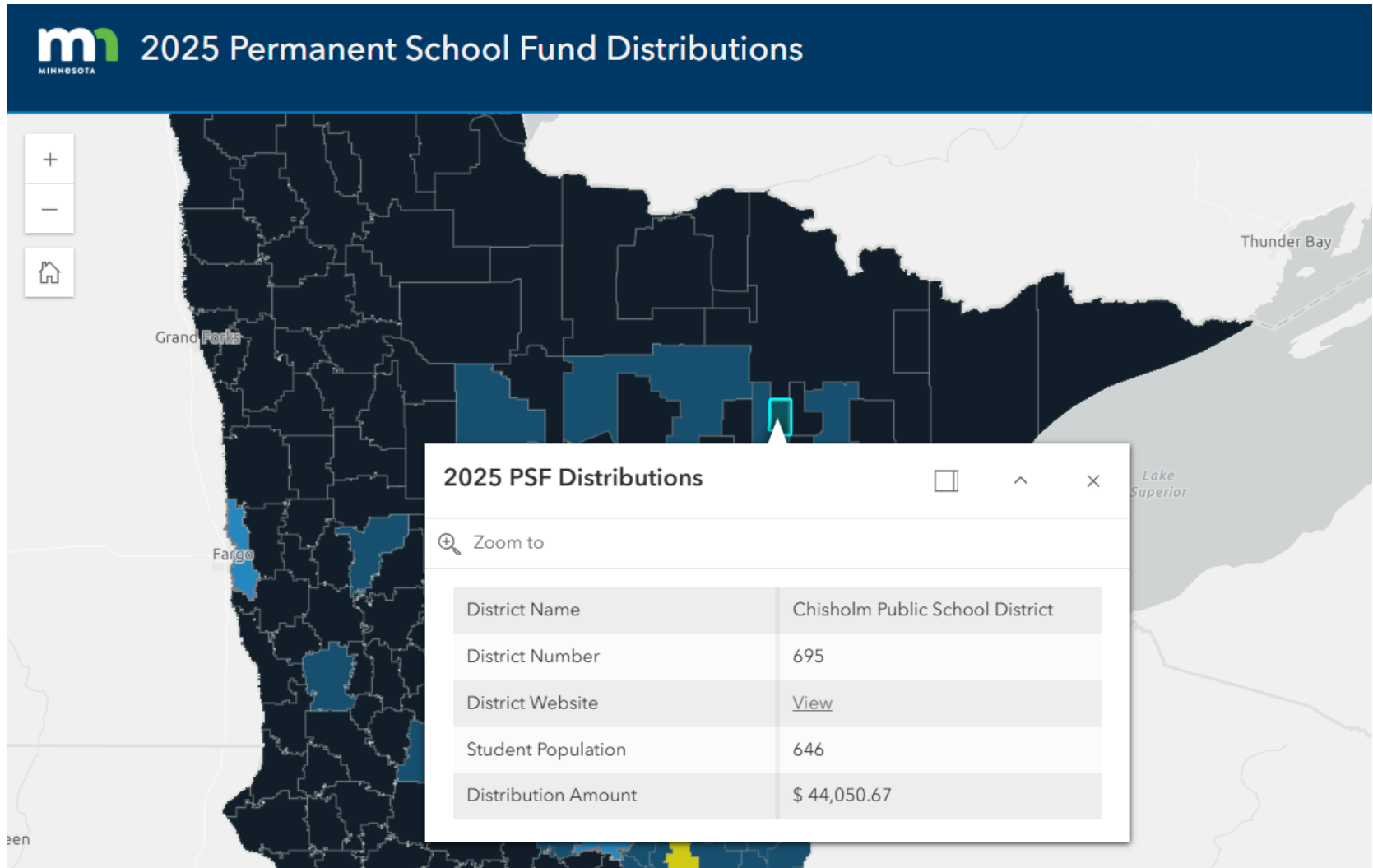


PSF Task Force

PSF Distribution Comparison



PSF Distributions



Thank You

Aaron Vande Linde
aaron.vande-linde@state.mn.us
651-279-2393
mn.gov/school-trust-lands

